



**REGIONAL SPECIALISED METEOROLOGICAL CENTRE-TROPICAL CYCLONES, NEW DELHI
TROPICAL WEATHER OUTLOOK**

DEMS-RSMC SPECIAL TROPICAL CYCLONES NEW DELHI DATED 22.12.2021

TROPICAL WEATHER OUTLOOK FOR NORTH INDIAN OCEAN (THE BAY OF BENGAL AND ARABIAN SEA) VALID FOR NEXT 120 HOURS ISSUED AT 0600 UTC OF 22.12.2021 BASED ON 0300 UTC OF 22.12.2021.

BAY OF BENGAL:

YESTERDAY'S WELL MARKED LOW PRESSURE AREA OVER SOUTH ANDAMAN SEA & ADJOINING MALACCA STRAIT HAS WEAKENED INTO A LOW PRESSURE AREA (LPA) OVER NORTHERN PARTS OF MALACCA STRAIT & NEIGHBOURHOOD AT 1200 UTC OF YESTERDAY, THE 21ST DECEMBER, 2021. THE LPA HAS MOVED FURTHER EASTWARDS TOWARDS MALAY PENINSULA. THIS IS LAST UPDATE IN ASSOCIATION WITH THIS SYSTEM.

AS PER SATELLITE IMAGERY AT 0300 UTC OF TODAY THE 22ND DECEMBER, SCATTERED LOW AND MEDIUM CLOUDS WITH EMBEDDED INTENSE TO VERY INTENSE CONVECTION OVER NORTH PARTS OF STRAIT OF MALACCA, ADJOINING MALAY PENINSULA, NORTH SUMATRA & NEIGHBOURHOOD IN ASSOCIATION WITH LOW LEVEL CIRCULATION OVER THE AREA. MINIMUM CLOUD TOP TEMPERATURE IS MINUS 83°C.

SCATTERED LOW AND MEDIUM CLOUDS WITH EMBEDDED MODERATE TO INTENSE CONVECTION OVER SOUTH ANDAMAN SEA. SCATTERED LOW AND MEDIUM CLOUDS WITH EMBEDDED WEAK TO MODERATE CONVECTION OVER SOUTHEAST BAY OF BENGAL

PROBABILITY OF CYCLOGENESIS (FORMATION OF DEPRESSION) DURING NEXT 120 HRS:

24 HOURS	24-48 HOURS	48-72 HOURS	72-96 HOURS	96-120 HOURS
NIL	NIL	NIL	NIL	NIL

ARABIAN SEA:

SCATTERED LOW AND MEDIUM CLOUDS WITH EMBEDDED MODERATE TO INTENSE CONVECTION OVER SOUTH ARABIAN SEA SOUTH OF LAT 6.0 N.

PROBABILITY OF CYCLOGENESIS (FORMATION OF DEPRESSION) DURING NEXT 120 HRS:

24 HOURS	24-48 HOURS	48-72 HOURS	72-96 HOURS	96-120 HOURS
NIL	NIL	NIL	NIL	NIL

REMARKS:

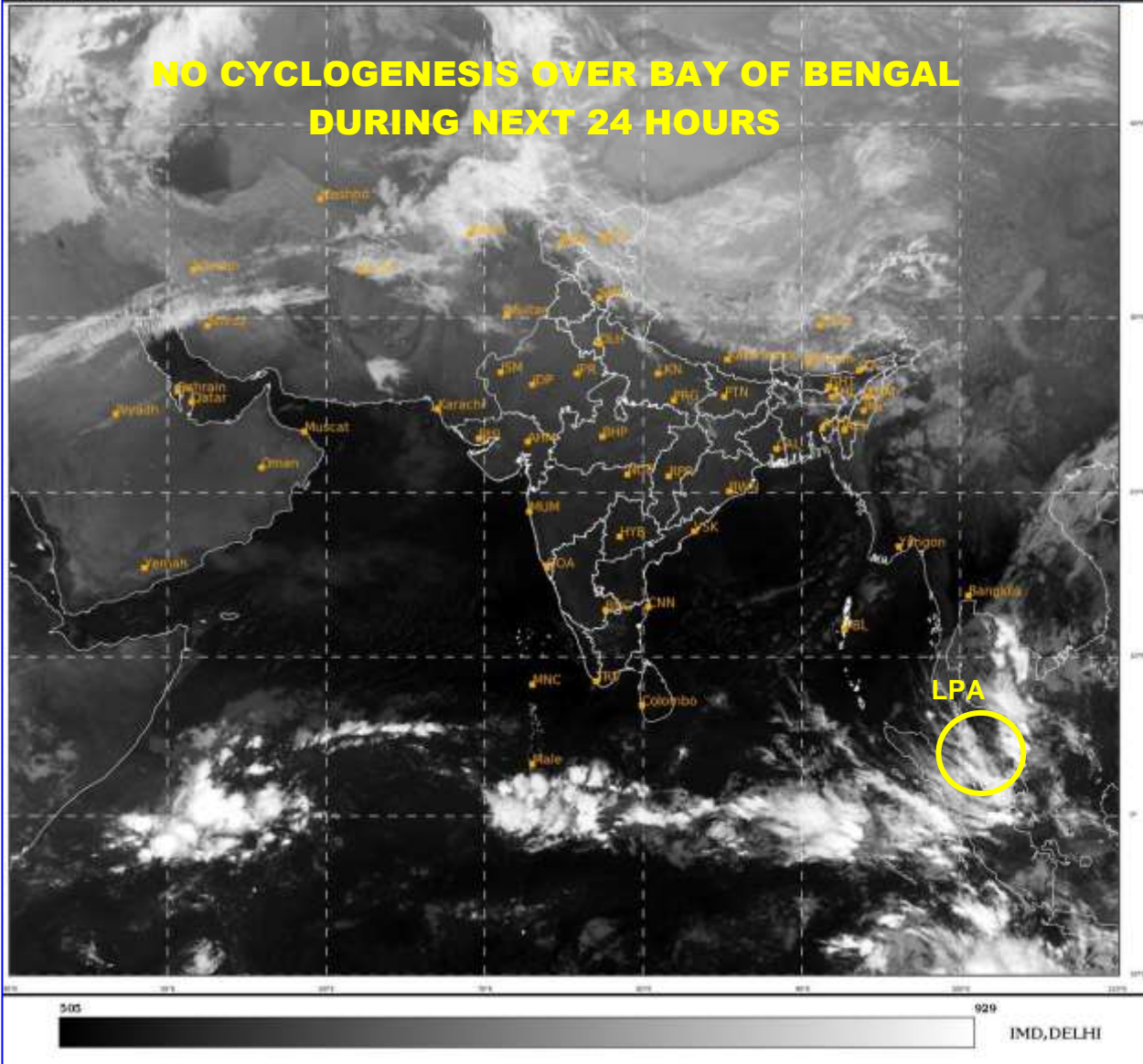
NIL

SAT : INSAT-3D IMG
IMG_TIR1 10.8 um
LIC Mercator

22-12-2021/(0300 to 0327) GMT
22-12-2021/(0830 to 0857) IST



**NO CYCLOGENESIS OVER BAY OF BENGAL
DURING NEXT 24 HOURS**



- **LPA STANDS FOR LOW PRESSURE AREA**